

Safety rail, Secure your walkings on roof with MECOSUN products

mecosun
Your Best Support



MECOSUN safety rail has been developed to improve walkings on every BIPV roof with MECOSUN systems.

This safety rail will help you to realize the maintenance or the washing of your solar panel more easily.

Safety

- According to the standard EN 795 – D (Horizontal belay line with rail)
- Suspended work possible

Adaptability and reliability

- Adaptable to every agricultural, industrial or public buildings with MECOSUN systems
- Adaptable on landscape or portrait installation
- Materials used are recyclable and are chosen for their high resistance in time against the climate impact (aluminum profiles, stainless steel screws...)

Optimization

- Not any shadows on solar roof
- Possibility to work with maximum 6 persons
- Not necessary to let the sliding carriage on the safety rail

Simplicity of installation

- Setting at the ridge of the solar roof
- Possibility to join many rails to adapt this product for every length of roof

Complete kit

Complete kit delivered with every screws and bolts

Training

MECOSUN, certified as a training center, suggest a support with a training for the installation of our systems. During these training sessions, a presentation of this safety rail is done.



> Your guarantee of MECOSUN's experience:

- * 1,200,000m² of installations using our solutions since 2006
- * Industrial support compliant with the Technical Evaluation of the CSTB
- * All solutions complying with CEIAB criteria's

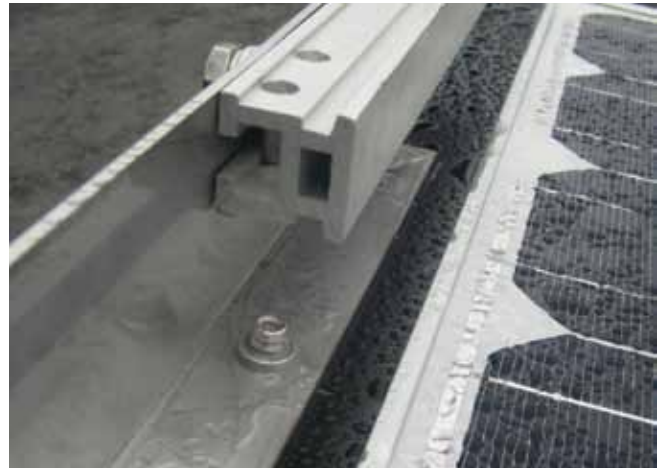
General technical specifications

Components	Safety rail + sliding carriage + stainless steel interface + locking tabs
Esthetism	A painted rail can be delivered with the wanted color
Type of roofs	All new or existing roofs with MECOSUN solution
Installation way	Installation on portrait or landscape solar roof
Safety rail length	6 meters of unit length (possibility to join this rail without limit)
Distance between stainless steel interface	Every 2 RSM (Landscape), every 3 RSM (portrait) / RSM: Rail Support Module
Static resistance of the interface	500daN / 3 min (successful test)
Rail resistance	1500 daN / 6 persons
Standard	EN 795-D (Horizontal belay line with rail)

1



2



3



1. General view of an installation
2. Setting of the rail with the stainless steel interface
3. Installation of sliding carriage and removable stop

For further information, contact us on +33 (0)5 62 14 07 11
or e-mail us at info@mecosun.fr

www.mecosun.com

Safety Rail specifications, version 01.2012
Non contractual information, provided for guidance only.
© Copyright Mecosun 2012. All right reserved.
Mecosun, Zac du Boutet, 7 avenue Marconi, F-31470 Saint Lys
RCS Toulouse 503 865 248
MECOSUN® - Registered trademark